

Tucán Country Club & Resort

villas • condos • rentals • golf

Luxury Properties in The Panama Canal Area

Gated Community / 18 Hole Golf Course

PRE
SALE

THE FOREST TOWERS I APARTMENTS



Product Description



Sales (Panama) (+507) 211 7777

Russia: +7 (800) 555 06 67

U.S. : 866 206 4486

info@tucancountryclub.com

www.TucanCountryClub.com

*Forest Towers I: 5 levels • 41 units (2 penthouses included)

Apartments: 1 BDR from 673.92 Sq.Fts. • 2 BDR from 925.26 Sq.Fts. • 3 BDR from 1,373.90 Sq.Fts. • Penthouse from 3242.95 Sq.Fts.

Units include: Laundry and kitchen appliances • Central A/C • parking space.

Social area: Swimming pool • Open deck • Gacebo • Playground • Ball room • Gym.

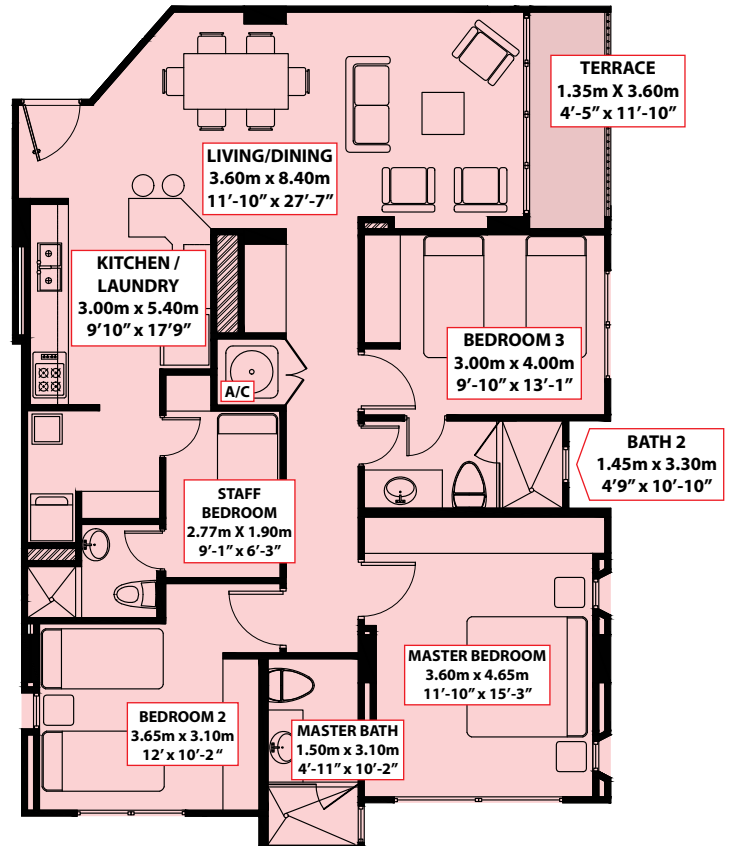
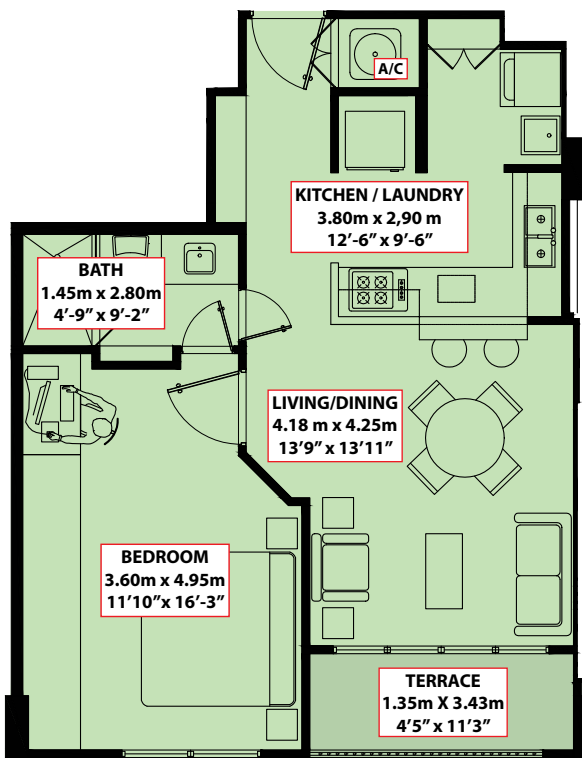


TYPE A: from 673.92 Sq. Fts. / 62.6 sq. mts.

2 units looking to the street (ground floor) - 8 units looking at Panama Canal
5 units looking at Forest Reserve

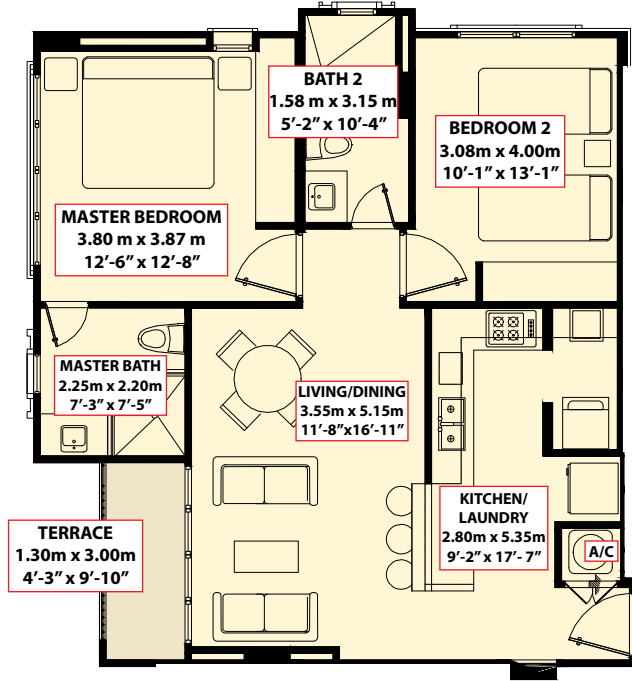
TYPE B: from 1,373.90 Sq. Fts. / 127.63 sq. mts.

8 units looking at Panama Canal - 1 unit looking at Forest Reserve



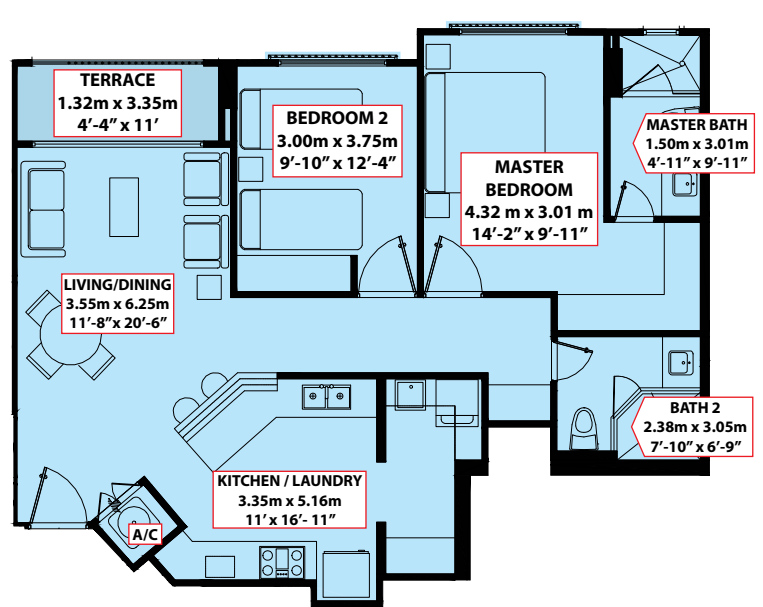
TYPE C: from 925.26 Sq. Fts. / 85.95 sq. mts.

1 unit looking to the street (ground floor) • 9 units looking at Panama Canal.



TYPE D: from 990.27 Sq. Fts. / 92 sq. mts.

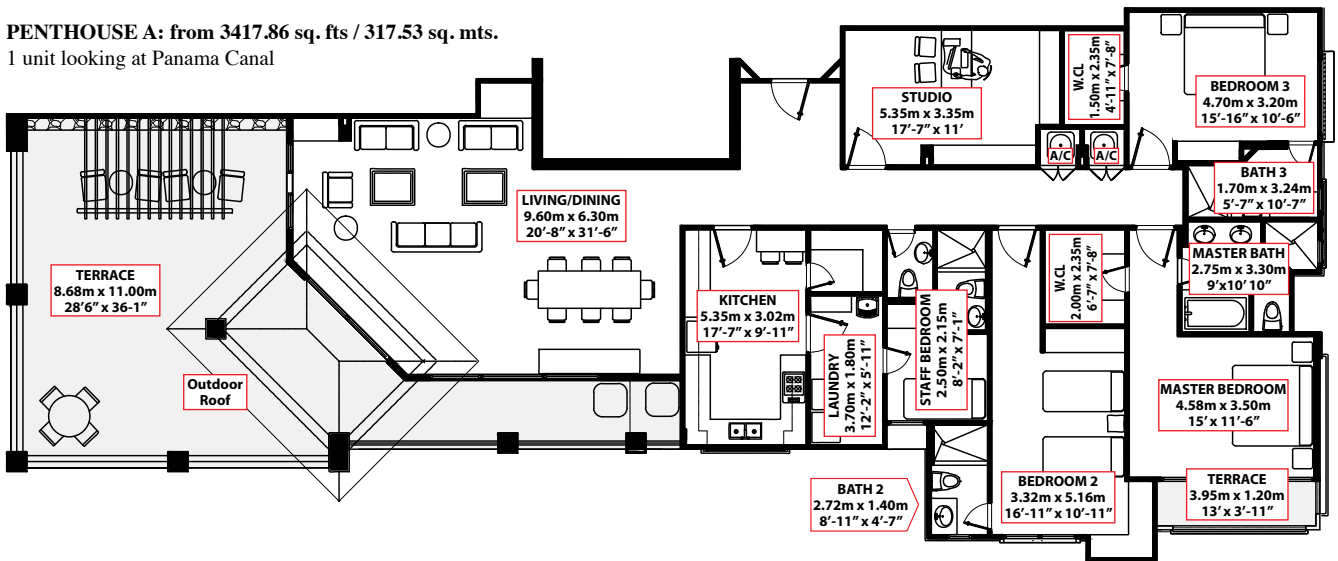
5 units looking at Forest Reserve



PENTHOUSES (ONLY IN TOP FLOORS)

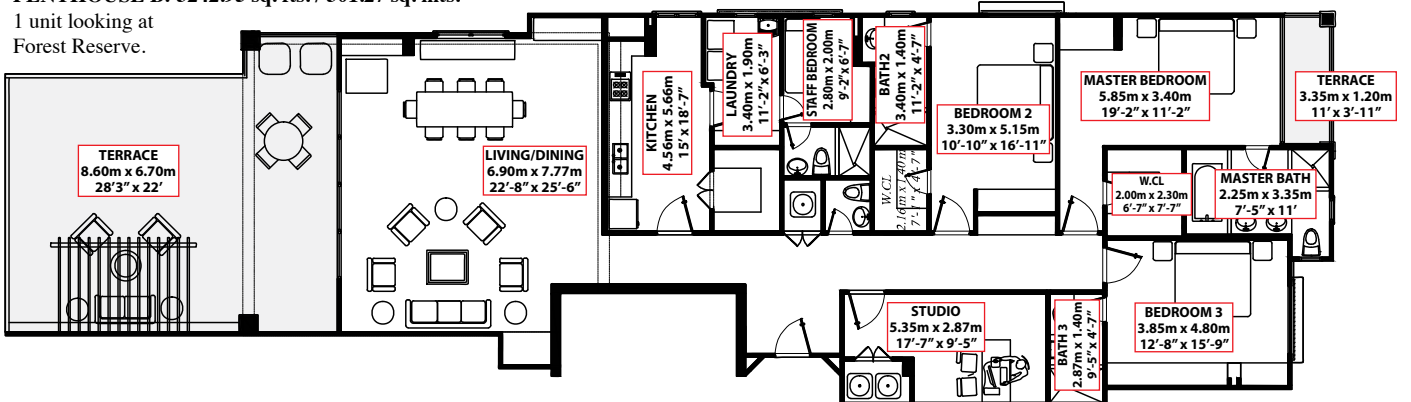
PENTHOUSE A: from 3417.86 sq. fts. / 317.53 sq. mts.

1 unit looking at Panama Canal



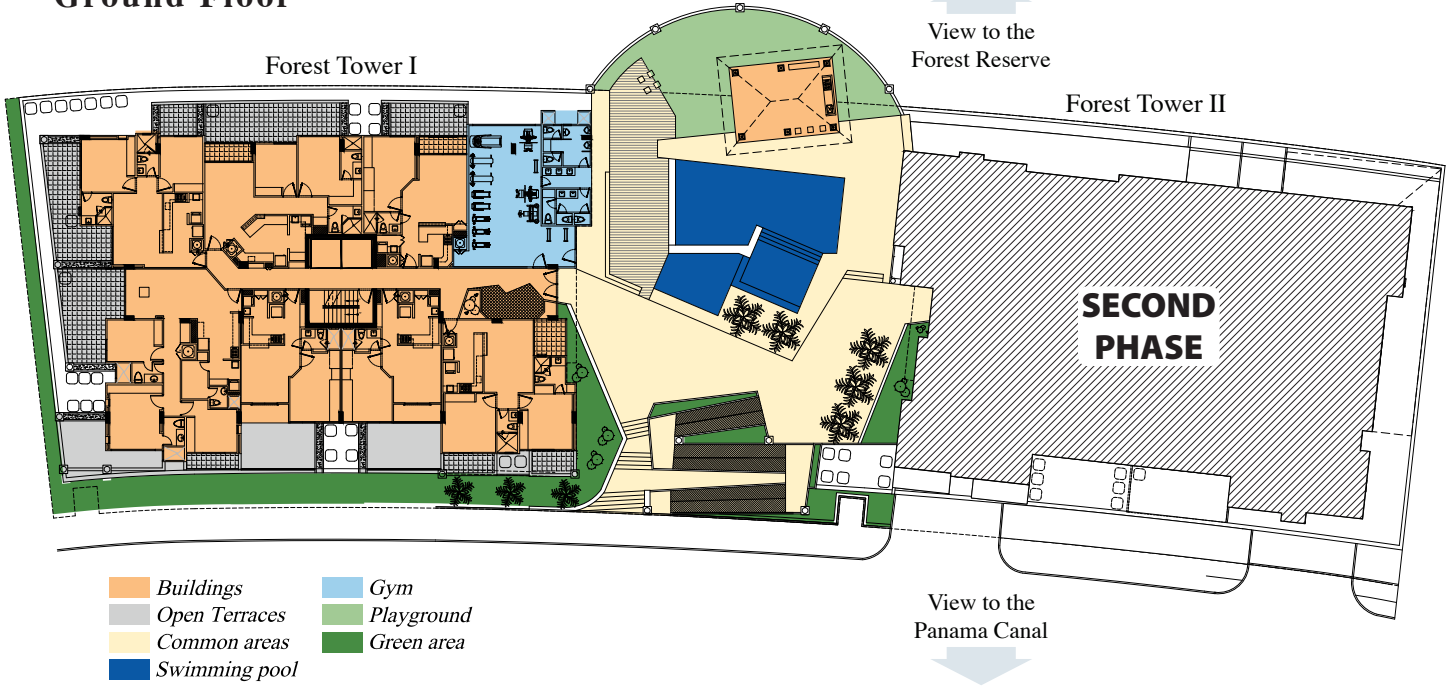
PENTHOUSE B: 3242.95 sq. fts. / 301.27 sq. mts.

1 unit looking at Forest Reserve.



* Concepts, appearance, and specifications of this model is an artistic representation of the promoter, who reserves the right to modify or withdraw any or all of this elements, according with his discretion without notice.

Ground Floor



Area: 2809.27 sq. mts. / 30,238.72 sq. fts.

